



# NATAL BOX GROUP COMPANY PROFILE

Palletizing in Africa since 1944

[www.natalbox.co.za](http://www.natalbox.co.za)



**CERVANTE**  
Industrial Suppliers

**IMVELO DOORS**



**SIYAKHA**  
WASTE MANAGEMENT

...



# Table Of Content

1	Table Of Content	2	Welcome Message
3	Company History	4	Gallery
5	Vision And Misson	6	Management Structure
7	Natal Box Factory (NBF)	8	NBF Services
9	NBF Services	10	Flobin Pallets
11	Shelving Decks	12	Wooden Bulk/Pallet Boxes
13	Wooden Crates & Industrial boxes	14	NBF Products
15	Cooperative Businesses	16	Cooperative Businesses Products
17	Cervante	18	Cervante Pallet Wrap Solutions
19	Cervante Pallet Wrap Benefits	20	Imvelo Doors
21	Imvelo Doors Services	22	Imvelo Doors Products
23	Siyakha Waste Management	24	Siyakha Sustainable Waste Solutions
25	Siyakha Benefits Sustainable Waste Solutions	26	Siyakha Products
27	Environmental Responsibility	28	Social Responsibility
29	Certifications & Acknowledgements	30	Contact Information



# Welcome Message

At Natal Box Group, we pride ourselves on delivering excellence ensuring our products meet the highest quality standards to support our clients' unique needs.

As we continue to grow and innovate, our focus remains on sustainability, craftsmanship, and expanding our reach both locally and globally. Our dedicated team works tirelessly to create solutions that not only meet industry demands but also contribute to a greener future through eco-friendly practices.

We value the trust and partnerships we have built with our clients, and we are committed to maintaining this trust through integrity, reliability, and continuous improvement. Together, we aim to create a lasting impact on the industries we serve.

Thank you for being part of our journey.

Warm regards,

*Mohamed Fuad Suleman*

Chief Executive Officer  
Natal Box Group





# Company History

Since 1944



Natal Box Factory (NBF) was founded in 1944 by the Suleman family and has since become a pioneer in pallet manufacturing. Over decades, we have honed our expertise and techniques to deliver exceptional packaging solutions tailored to meet the diverse needs of our customers.



- 1944 – Present: Perfected the manufacturing of wooden pallets, crates, and industrial wooden boxes.

- 2009 – Present: Expanded operations with the acquisition of **Cervante Industrial Suppliers**, a plastic manufacturing plant specializing in pallet wrap. This addition allows us to provide customers with a comprehensive packaging solution.



- 2013 – Present: Launched **Imvelo Doors**, a dedicated facility producing high-quality internal and external doors, as well as window and door frames.

- 2015 – Present: Established woodworking cooperatives to empower disadvantaged and unskilled community members. These initiatives produce and sell pallet furniture, wendy houses, wooden tools, toys, home décor, and more at flea markets, directly benefiting the cooperatives.



- 2022 – Present: Launched **Siyakha Waste Management**, an eco-innovation hub creating sustainable waste solutions. The factory converts sawdust and wood shavings into compressed blocks, eco-friendly pallets, and biofuel pellets for renewable energy, air and water purification, fertilizers, and low-emission fuels.

04. ●●●

## Gallery



**1944**  
**Jacobs Road**



**1955**  
**Umgeni Road**



**1965**  
**Sirdar Road**  
**Clairwood**

**Current**  
**Isipingo Rail**







## Vision

Natal Box Group is committed to delivering high-quality products at competitive prices, supported by our team's dedication to service excellence. We provide a seamless packaging solution from wooden pallets to fully secured, pallet-wrapped parcels, ensuring convenience and reliability at every step.

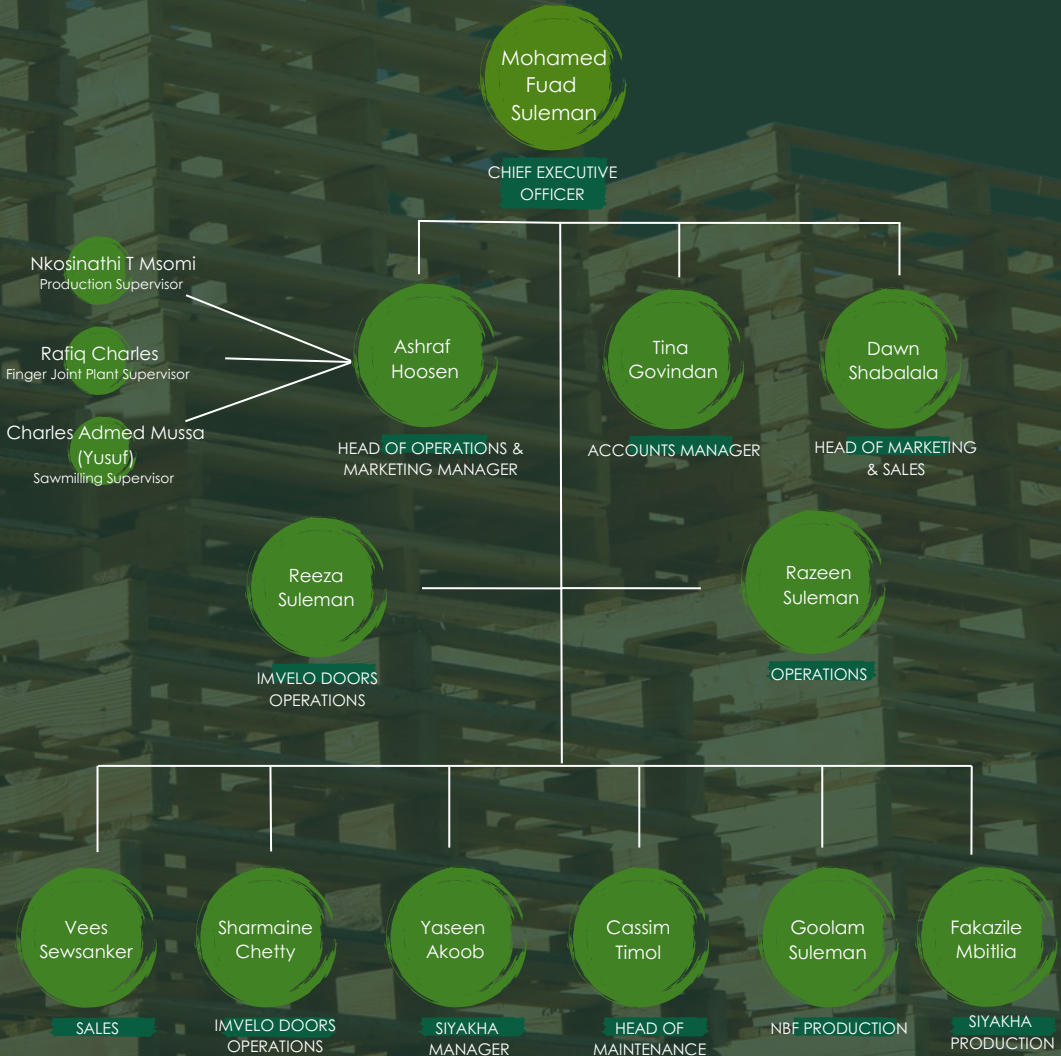


## Mission

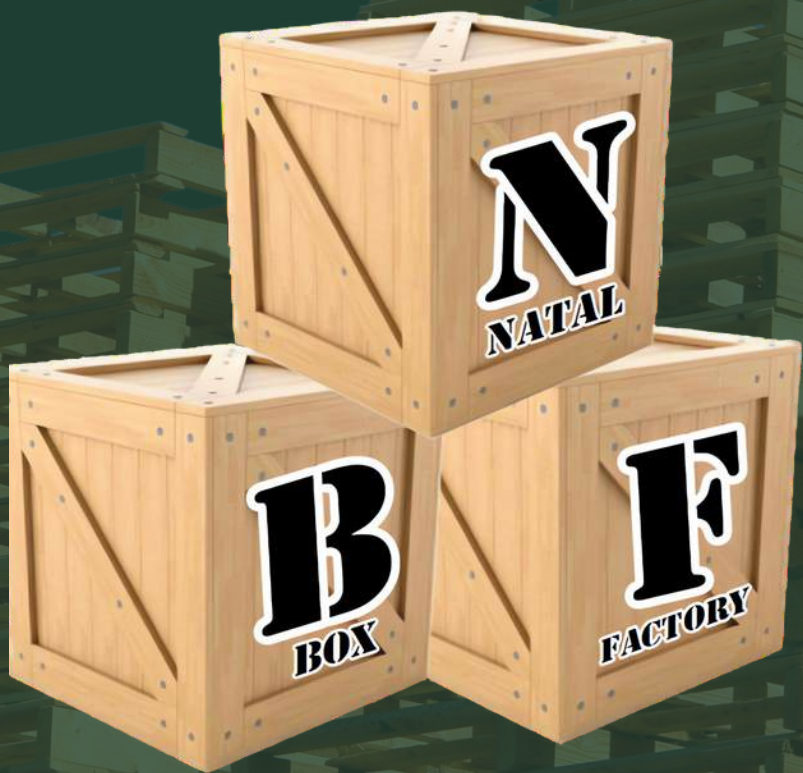
Our vision is to establish a global footprint, supplying our diverse range of products to both local and international markets. Through strategic growth, we aim to create meaningful employment opportunities, fostering economic development. Natal Box Group is dedicated to empowering employees by providing comprehensive training, ensuring professional growth and a skilled workforce.

# Management Structure

Meet the team!









# Services

## **Pallet Manufacturing and Supply**

Natal Box Factory specializes in providing high-quality pallets and packaging solutions to a wide range of industries, including the automotive sector and the food and beverage industry.

Our expertise spans:

- **Comprehensive Pallet Solutions:**
  - Supplying standard and customized pallets for diverse applications, including warehouse operations and the transportation of specialized items such as differentials, engines, and gearboxes.
  - Designing tailored packaging solutions for sensitive components like body panels and windcreens.
- **Personalized Service:**
  - Our skilled and trained staff visit customer premises to evaluate specific palletizing needs and design customized solutions that meet unique requirements.
- **Diverse Offerings:**
  - Manufacturing pallets for both local and export use.
  - Producing treated pallets specifically for the food and beverage industry, adhering to stringent hygiene standards.
  - Supplying plastic pallets on demand.







# Services

- **Sustainable Practices:**

- Purchasing, refurbishing, and reselling used pallets as part of our commitment to eco-friendly operations.

## **Value-Added Services**

- **On-Site Pallet Repair Plants:**

- We establish and operate pallet repair plants at customer sites, ensuring a continuous and seamless supply of pallets within their supply chain.

- **Pallet Hire Solutions:**

- Providing flexible pallet rental services to meet short- or long-term needs.

## **Industry Partnerships**

As a first-tier supplier to various packaging companies, Natal Box Factory possesses the expertise and resources to address the needs of our diverse clientele, offering innovative solutions that align with international quality standards.

Our dedication to quality, customer service, and sustainable practices positions us as a trusted partner for all your pallet and packaging needs.





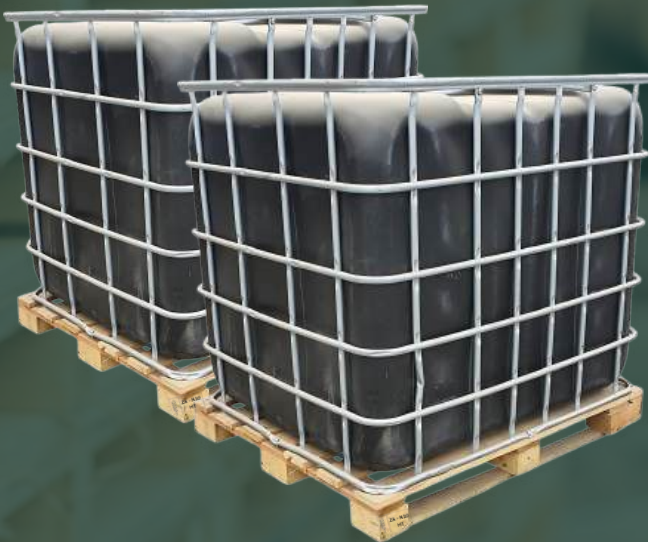
# Specialized Products

## Flowbin Pallets

Flowbin pallets are expertly designed to support heavy liquid tanks, ensuring secure and stable transportation.

Key features include:

- **Tailored Design:**
  - Each pallet is custom-built to accommodate the specific size and volume of the liquid tank it supports.
- **Experienced Craftsmanship:**
  - With over 30 years of expertise, our skilled staff ensures precision and durability in every Flowbin pallet.





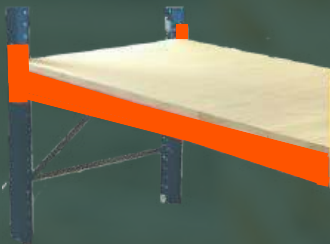


# Specialized Products

## Shelving Decks

Pallet shelving decks are an efficient solution for warehouse storage, offering:

- **Vertical Storage Optimization:**
  - Maximizing space utilization by enabling high-level storage.
- **Organizational Benefits:**
  - Enhancing warehouse efficiency through improved organization and accessibility.





# Specialized Products

## Wooden Bulk Bins & Pallet Bins

Ideal for the transportation and storage of fruits, vegetables, cold storage goods, and other items, our bulk bins and pallet bins are crafted to meet the highest standards.

- **Customization:**
  - Designed to the customer's exact specifications, ensuring optimal functionality and performance.
- **Premium Materials:**
  - Manufactured from kiln-dried, treated timber to meet health and safety standards when required.
  - Reinforced with galvanized steel for added strength.
- **Product Protection:**
  - Rounded slats and internal corners minimize damage to the goods during storage and transit.







# Specialized Products

## Wooden Crates & Industrial Boxes

We manufacture versatile wooden crates and industrial boxes for both local and export use, catering to a variety of applications.

- **Custom Solutions:**
  - Crates and boxes are custom-built to meet specific customer requirements, with options for collapsible designs.
- **Certification and Compliance:**
  - Fumigation certificates are provided upon request to meet international shipping standards.
- **Diverse Applications:**
  - Supplying to parts and accessory divisions (P&A) of automotive manufacturers.
  - Specializing in crates for the safe transport of animals, such as rabbits and dogs.
- **Box Hire Services:**
  - Flexible rental options available to meet temporary needs.



CRATE



OSB BOX



SOLID BOX

PLY BOX



14. ●●●

# Products



TWO WAY ENTRY  
Reversible



TWO WAY ENTRY  
Close Boarded, no base board



TWO WAY ENTRY  
Wing Type



FOUR WAY ENTRY  
Close boarded, 3 base



EURO PALLET  
1200 x 800



FOUR WAY ENTRY  
Perimeter Base



FOUR WAY ENTRY  
Wing Type



FOUR WAY ENTRY  
Close boarded, Perimeter base



FOUR WAY ENTRY  
Open boarded, 3 base



ZA - N10  
HT



FUMIGATION  
CERTIFICATE



ISPM 15  
CERTIFIED

## Complete Packaging Solution





# Cooperative Businesses



Through our partnerships with **cooperative businesses**, **Natal Box Factory** supports the local economy by promoting a range of complementary wooden products and services.

## Product Range:

- **Pallet Furniture:**
  - Beautiful and functional furniture pieces crafted from reclaimed pallet wood, including tables, chairs, and shelving units.
- **Wendy Houses:**
  - Compact and versatile wooden structures suitable for storage, playrooms, or garden retreats.
- **Wooden Tools and Kitchen Accessories:**
  - Durable, eco-friendly kitchenware and tools such as cutting boards, rolling pins, and utensils.
- **Children's Toys:**
  - Handcrafted wooden toys that are safe, durable, and designed to inspire creativity in children.
- **Home Décor Products:**
  - Unique and stylish wooden décor items, from picture frames to decorative wall art, enhancing living spaces with a natural touch.

By collaborating with cooperative businesses, **Natal Box Factory** fosters innovation, sustainability, and economic growth while offering a comprehensive range of wooden products that meet the diverse needs of our customers.

16. ●●●

# Cooperative Businesses Products







**CERVANTE**  
Industrial Suppliers

# Pallet Wrap Solutions

**Cervante Industrial Suppliers**, a division of Natal Box Factory, specializes in manufacturing and supplying high-quality pallet wrap for a wide range of customers, including leading blue-chip companies. Our pallet wrap products are designed to enhance efficiency, protect goods, and provide cost-effective solutions for various industries.

## Key Benefits of Pallet Wrap

- **Enhanced Load Security:**
  - Ensures products are securely wrapped, reducing the risk of damage during shipping and handling.
- **Product Protection:**
  - Shields goods stored outdoors from harmful UV rays.
  - Prevents exposure to dust, moisture, and dirt, maintaining product integrity.
- **Cost-Effective Solution:**
  - More economical than alternatives like strapping, corrugated materials, or heat shrink film.
  - Equipment costs are typically lower compared to shrink wrapping or strapping systems.
- **Improved Operational Efficiency:**
  - Enhances the speed and effectiveness of packaging operations, saving time and labor.

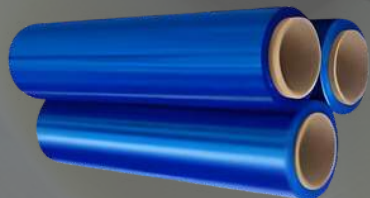




# Pallet Wrap Benefits

- **Security and Privacy:**
  - Strong pallet wrap conceals load contents, reducing the likelihood of pilferage.
- **Optimized Inventory Control:**
  - Simplifies tracking and organizing inventory, streamlining warehouse management.
- **Versatility:**
  - Suitable for various pallet load types, accommodating a wide range of goods and configurations.
- **Sustainability:**
  - Pallet wrap is recyclable, supporting eco-friendly and sustainable packaging practices.

**Cervante Industrial Suppliers** is committed to delivering premium pallet wrap solutions that combine durability, cost-efficiency, and environmental responsibility, ensuring our customers' operations run smoothly and effectively.





IMVELO DOORS



## Services

**Imvelo Doors**, a division of Natal Box Factory, specializes in the design, manufacture, and supply of high-quality wooden doors, door frames, and window frames, catering to a diverse clientele across residential, commercial, and industrial sectors.

- **Wooden Doors:**
  - A wide range of styles, from traditional to contemporary, designed to enhance the aesthetics and functionality of any space.
  - Manufactured using premium-quality timber to ensure durability, strength, and long-lasting performance.
  - Customizable options available, including panel designs, finishes, and dimensions to suit customer preferences.
- **Door Frames and Window Frames:**
  - Expertly crafted to complement our wooden doors or fit existing structures.
  - Engineered for durability, weather resistance, and ease of installation.
  - Available in various sizes and finishes to meet architectural and design requirements.
- **Custom Solutions:**
  - Tailored manufacturing to meet specific design or functionality needs, providing a personalized experience for every customer.

### **Value Proposition**

- Imvelo Doors emphasizes sustainable sourcing and environmentally responsible production practices, ensuring our products are eco-friendly and ethically crafted.
- Our experienced team is committed to delivering exceptional craftsmanship and customer service, ensuring client satisfaction at every step of the process.

22. ● ● ●



## Products







**SIYAKHA**  
WASTE MANAGEMENT

# Pioneering Sustainable Waste Solutions

**Siyakha Waste Management**, introduced in 2022 as an eco-innovation hub under Natal Box Factory, is redefining the waste management landscape through innovative and sustainable practices. With a focus on transforming waste materials into valuable, eco-friendly products, Siyakha is at the forefront of reducing environmental impact and promoting a circular economy.

## ***Our Expertise and Products:***

- **Sawdust and Wood Shavings Transformation:**
  - Converting sawdust and wood shavings into compressed blocks and sawdust pallets that serve as eco-friendly alternatives to traditional materials.
- **Plastic Recycling:**
  - Manufacturing plastic pallets from recycled plastics, offering durable and lightweight solutions for a variety of industries.
- **Biofuel Production:**
  - Producing cost-effective biofuel pellets, a renewable energy source with diverse applications:
    - Air and Water Purification: Adsorbent properties make them ideal for cleaning environments.
    - Slow-Release Fertilizers: Enhancing agricultural productivity sustainably.
    - Low-Emission Fuels: Providing an alternative energy source to reduce carbon footprints.
- **Innovative Waste-to-Product Solutions:**
  - Transforming waste into versatile products that meet industrial needs while reducing landfill contributions.



# Benefits to Sustainable Waste Solutions

## Why Choose Siyakha Waste Management?

- **Eco-Friendly Operations:**
  - Committed to environmental preservation, Siyakha offers solutions that significantly reduce waste and pollution.
- **Cost-Effective Alternatives:**
  - Our products, such as sawdust pallets and compressed blocks, provide economical and sustainable options for businesses seeking to lower costs and meet green standards.
- **Industry Leadership:**
  - With cutting-edge technology and innovative processes, Siyakha leads the way in waste management and recycling.

## Sustainability at the Core

- Siyakha Waste Management is dedicated to fostering a sustainable future by providing businesses with practical and environmentally conscious solutions. By repurposing materials like sawdust, wood shavings, and plastic, we not only minimize waste but also contribute to cleaner energy solutions and a healthier planet.

# Products



SAWDUST PALLET



PLASTIC PALLET



COMPRESSED BLOCKS



BIOFUEL PELLETS



COMPRESSED BOARDS





# Environmental Responsibility

## Sustainable Timber Sourcing

- Certified Timber: We source timber from certified sustainable forests, promoting responsible forest management.

## Eco-Green Strategies

- Wood Recovery: Our in-house plant reclaims and processes timber, reducing waste and enhancing cost efficiency.
- Sawdust Utilization: Sawdust fuels geysers in staff quarters, cutting waste and improving energy efficiency.
- Off-Cut Timber: We supply off-cuts to partners for manufacturing furniture, toys, tools, and more, supporting a circular economy.

## Commitment to Waste Reduction

- Zero Waste: We prioritize reusing and recycling timber and sawdust to minimize landfill contributions.

## Eco-Friendly Products

- Recycled Materials: Our products incorporate reclaimed materials, offering sustainable options to customers.

Through these efforts, Natal Box Factory ensures eco-friendly operations, contributing to a greener, more sustainable future.



# Social Responsibility



At Natal Box Factory, we are dedicated to creating positive, lasting impacts within our communities through initiatives that empower individuals, improve living conditions, and drive local economic growth. By establishing cooperative businesses, we provide unemployed individuals with opportunities to become self-sustaining income earners. Partnering with customers, we support meaningful projects such as manufacturing school desks for underprivileged schools and supplying timber for housing and infrastructure in informal settlements like Isipingo and Umlazi, addressing critical needs for stability and development.

Our commitment extends to skills development, offering training in areas like First Aid and specialized machinery operation to equip unskilled workers with valuable, employable skills. We also create employment opportunities for individuals with disabilities, promoting inclusivity and diversity in the workforce. Additionally, we donate sawdust and wood shavings to support subsistence farmers, aiding sustainable agricultural practices.

Through food schemes, we regularly provide meals and food parcels to underprivileged communities across South Africa and neighboring countries. Timber donations further empower individuals to produce and sell crafts, such as chest laundry bins, fostering financial independence for those in need.

We actively support charitable organizations and causes that align with our mission to uplift and empower others. Natal Box Factory is not just a business, it is a dedicated partner in building a more equitable and sustainable future for all.



# Certifications and Acknowledgements



Natal Box Factory proudly showcases its certifications, accolades, and memberships, reflecting a strong commitment to quality, sustainability, and excellence in business practices.

## Certifications and Standards

- **ISPM 15 Certification:** Adhering to international standards for treating wooden packaging materials for trade.
- **FSC Certification:** Promoting responsible forest management and sustainable timber sourcing.
- **BEE Level 1:** Demonstrating dedication to economic inclusivity and transformation.
- **Fumigation Certificates:** Provided upon request for compliance with international shipping standards.



FUMIGATION  
CERTIFICATE



## Industry Memberships

- **Minara Chamber of Commerce:** Active member since **2015**, supporting ethical and sustainable business practices.
- **Durban Chamber of Commerce:** Member since **1992**, fostering local and international business connections.

## Awards and Recognition

- **Best Medium Business of the Year (2012):** Recognized by **FNB Islamic Division** for industry contributions.
- **Certificate of Long Service (2014):** Honored by **Standard Bank** for over 70 years of trusted partnership.

## Our Commitment

These achievements reflect our dedication to:

- Maintaining global standards of quality and sustainability.
- Driving economic growth and transformation.
- Building strong, long-lasting partnerships.

With a legacy of trust, innovation, and community engagement, Natal Box Factory continues to set industry standards.





# Contact Information



+27 31 902 2414



[www.natalbox.co.za](http://www.natalbox.co.za)



[nbf@global.co.za](mailto:nbf@global.co.za)



82 Phila Ndwandwe Road,  
Isipingo Rail, Isipingo, 4110,  
South Africa

***Palletizing in Africa since 1944***